

Low Profile Air Mover Owner's Manual

Model
PL-700A,PL-700AM,XL-700A,XL-700AM

(220-240V~,50Hz)

Read and save these instructions



Read and save these instructions
www.xpower.com | www.tx-5.com.hk

Index: EU-1-A5
Edition: 1.0.Alpha

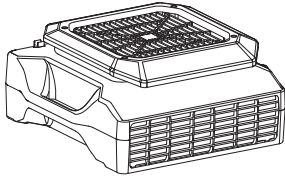
Safety Instructions

WARNING - READ AND SAVE THIS INSTRUCTIONS BEFORE USING THIS PRODUCT.

The user of electrical products may create hazards that include, but are not limited to injury, fire, electrical shock. Failure to follow these instructions may damage and/or impair its operation and void the warranty.

- Before operating, remove all packaging material and check for any damage that may have occurred during shipping or any missing items.
- Check household power supply to ensure it matches the appliance's specification.
- **DO NOT** operate any fan with a damaged cord or plug. Discard fan or return it to an authorized service facility for examination and/or repair.
- Use only on GFCI protected receptacles. Please contact a qualified electrician for verification and / or installation of a GFCI receptacle if necessary.
- **DO NOT** run cord under carpeting. **DO NOT** cover cord with throw rugs, runners, or similar coverings. **DO NOT** route cord under furniture or appliances. Arrange cord away from traffic area and where it will not be tripped over.
- To reduce the risk of fire or electric shock, **DO NOT** use this fan with any solid-state speed control device.
- **DO NOT** touch this appliance or the plug with wet hands or while standing in water.
- **DO NOT** operate the appliance in any pooled water.
- **DO NOT** use the product in areas where gasoline, paint or other flammable goods and objects are used or stored.
- **DO NOT** insert or allow objects to enter any ventilation or exhaust opening as this may damage the appliance and void the warranty.
- **DO NOT** cover the air inlet or outlet on the appliance.
- **DO NOT** direct the air flow at human faces or bodies.
- **DO NOT** allow children to play around or with this appliance.
- **AUTOMATICALLY OPERATED DEVICE** – To reduce the risk of injury, disconnect from power supply before servicing.
- Remove the power cord from the electrical receptacle by grasping and pulling on the power cord plug-end only, **DO NOT** pull the cord directly.
- **DO NOT** attempt to repair or adjust any electrical or mechanical functions of this appliance, as this may cause danger and void the warranty.
- If the appliance is damaged or it malfunctions, **DO NOT** continue to use it. Unplug the product from the electrical outlet. Refer to troubleshooting guide or contact XPOWER.
- Store in a dry area, away from exposure to sunlight, extreme temperature and humidity, or other extreme environments, when not in use.
- **DO NOT** stack more than four units of this appliance.
- An electronic instruction manual can be obtained through manufacturer's website www.xpower.com.

Items Included

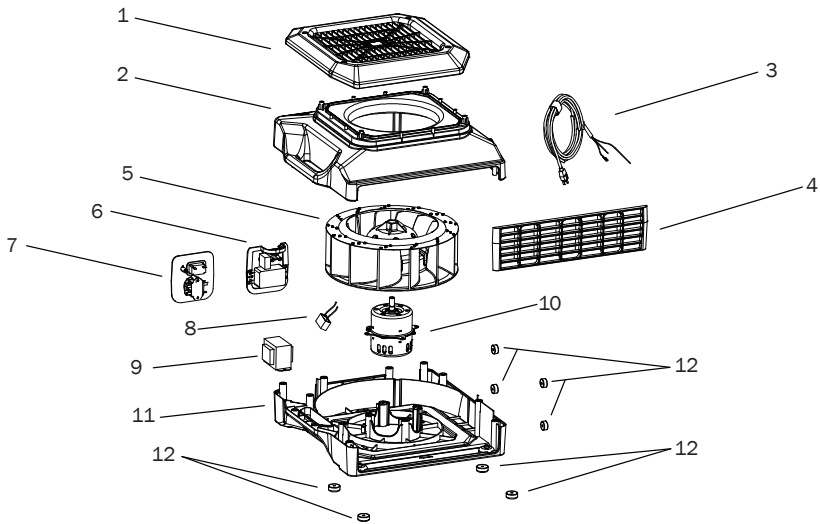


- Low Profile Air Mover x 1



- Owner's Manual x 1

Parts Description

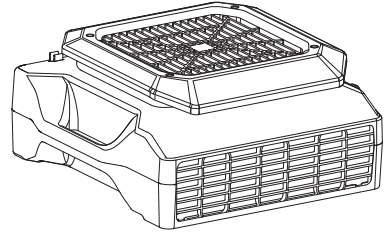


- | | | |
|-------------------------|--------------------------------------|---------------------|
| (1) Inlet Grille Cover | (6) Additional Electrical Receptacle | (10) Motor |
| (2) Top Housing | (7) Switch Plate | (11) Bottom Housing |
| (3) Power Cord | (8) Capacitor | (12) Rubber Feet |
| (4) Outlet Grille Cover | (9) Transformer* | |
| (5) Fan | | |

* For model PL-700AM,XL-700AM only.

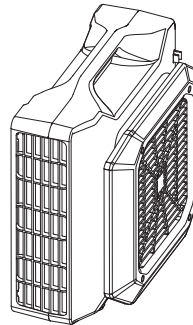
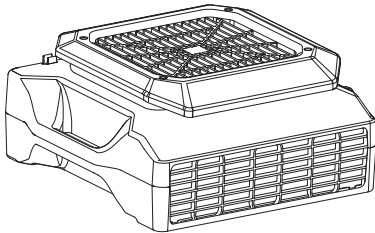
Low Profile Air Mover Introduction

- The XPOWER Low Profile Air Mover produces a plentiful airflow capacity for small to large jobs for any location size.
- It is ideal for drying tight spaces such as crawl spaces, under counters, inside cabinets, bathrooms, auto interiors, and more.
- It's also designed for professional carpet cleaning, water damage restoration jobs, or home use.

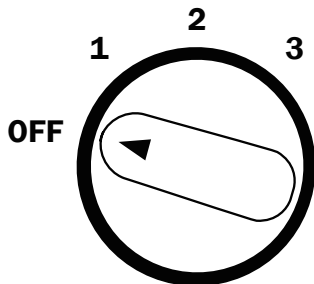


Operation Guide

Multiple Operating Positions



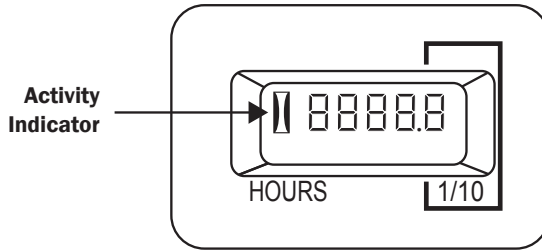
The low profile air mover can operate at different positions, directing the airflow to desired areas.



Three Speed Control

- Turn to **"OFF"** position to switch the air mover OFF. Turn to any speed position to switch the air mover ON.
- Turn clockwise to set the desired fan speed.
- For three speed control: there are 3 fan speeds from: **1, 2, 3**. "**1**" is the lowest speed and "**3**" is the highest speed.
- For five speed control: there are 5 fan speeds from: **1, 2, 3**. "**1**" is the lowest speed and "**5**" is the highest speed.

Switch Plate



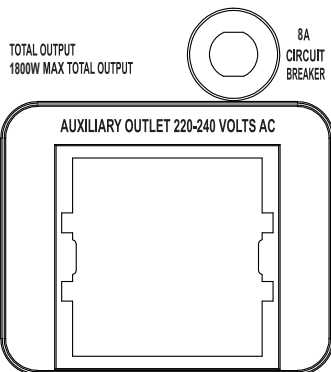
Time Meter (For Model PL-700AM,XL-700AM Only)

- The time meter shows the total running time from the first usage to the current moment.
- When the machine turns on, the activity indicator will blink. The running time starts to count. When the machine is off, the activity indicator will stay illuminated.
- The value can't be reset. When the value exceeds 9999.9 hours, it will start over from 0 again.

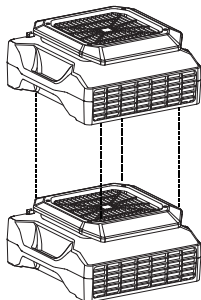
Additional Electrical Receptacle (Daisy Chain)

- Other appliances can be plugged in the additional electrical receptacles and work whether the air mover is on or off. However, the total amperage must be lower than the amperage instructed. Different models may have varying instructions.
- If the air mover or the plugged in appliance stops working, press the **CIRCUIT RESET BUTTON** to reset the circuit.

Regular Additional Electrical Receptacles



Transportation



Stack Multiple Units

- Stack the low profile air movers on the top sides. Align the air inlets of both low profile air movers.

WARNING

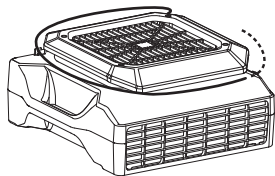
- Do not stack more than six units of this appliance.

User Maintenance Instructions

Frequent maintenance is recommended on this appliance. Failure to follow the maintenance instructions may cause failure of the appliance and void the warranty.

- When not in use, unplug and store the appliance in a dry and cool indoor place. Make sure it's out of reach of children.
- Before performing any maintenance or cleaning, always disconnect the air mover from its power source.
- Use a damp cloth to wipe the surface of the housing. Do not clean the unit with water directly.
- Check if the grille covers are clean. Remove dirt or any other objects that could block the air inlet and air outlet.
- Do not stack more than four units of this appliance.

Organize the Cord



- Wrap the power cord around the switch plate for storage after use.

Troubleshooting Guide

PROBLEM	POSSIBLE CAUSE	SOLUTION
Low profile air mover does not start	No electricity.	Check for power supply.
	The power cord is not properly plugged in.	Remove and reconnect the power cord.
	The machine is working under an extreme temperature.	Turn off the machine and unplug it. Let the machine cool down to normal temperature.
	The circuit breaker on the additional electrical receptacle (Daisy chain) jumps.	Remove all appliance on the additional electrical receptacle and press "Reset".
Unit runs but the speed is abnormal	Air inlet or air outlet is blocked.	Remove blockage.
The additional electrical receptacle has no power	The circuit breaker on the additional electrical receptacle (Daisy chain) trips.	Remove all appliances on the additional electrical receptacle and press circuit reset button.

If troubleshooting does not resolve your problem, please contact XPOWER or other parties authorized by XPOWER for further instructions.

Technical Specification

MODEL NUMBER	PL-700A	XL-700A	PL-700AM	XL-700AM
Voltage / Frequency	220-240V~,50Hz			
Amperage	1 A			
Motor Power	240 W			
Rated Airflow	1000 CFM			
Speed Control	3 Speeds			
Time Meter	N/A		9999.9 Hour	
Additional Electrical Receptacle	2 Normal Outlets			
Cord Length	4.7 m			
Unit Dimension (L) x (W) x (H)	21.0 x 45.0 x 45.0 cm			
Unit Weight	8.7 kg	9.3 kg	8.8 kg	9.4 kg
Safety Certification	CE/UKCA			

If your product(s) is not listed above, please visit www.xpowermfr.com for more information.

XPOWER Limited Warranty

1 YEAR LIMITED WARRANTY

XPOWER-branded products purchased in the U.S. from authorized distributors include a 1-year limited warranty. Contact XPOWER to confirm warranty information about your product(s).

This limited warranty covers defects in materials and workmanship in your XPOWER-branded products. Contact an XPOWER Distributor in your region for warranty service and parts replacement.

Items mentioned but not limited to below are not covered by warranty:

- (1) Power cord, batteries, filters or any other components considered as a “consumable parts” by XPOWER.
- (2) Normal wear and tear.
- (3) Problems that result, directly or indirectly, at XPOWER’s sole discretion, from:
 - (3.1) External causes such as accident, abuse, misuse or problems with electrical power supply.
 - (3.2) Disassembling, servicing or modification not authorized by XPOWER.
 - (3.3) Usage that is not accordant with product instructions stated in Owner’s Manual.
 - (3.4) Failure to follow the product instructions or lack of necessary maintenance stated in Owner’s Manual.



XPOWER Manufacture, INC.

668 S. 6th Ave.,
City of Industry, CA 91746 USA

Read and save these instructions
www.xpower.com | www.tx-5.com.hk

Index: EU-1-A5
Edition: 1.0.Alpha